

Datasheet *Spectacle blind*

Rev.1 July 2015

- ✓ To isolate sections of pipe
- ✓ A solid plate and a ring attached to each other
- ✓ Mounted between flanges
- ✓ Connection piece drilled and bolting placed through the hole : by loosening the bolts the spectacle blind can be rotated in the correct position
- ✓ In normal operation, to be mounted in the open position « ring spacer »
- ✓ In case of inspection, to blank off the pipe, to be rotated in the close position « spade »
- ✓ Spades and spacers can be supplied separately



Content

Overview.....	page 2
Technical specifications.....	page 2
Examples of drawings	page 3

A spectacle blind is a combination of a single blind (solid plate) and a ring spacer manufactured, for field convenience, as a single unit. A spectacle blind is a safety device used to isolate a section of line or a piece of equipment when the line or equipment needs to be inspected or removed from service. It is different from a valve in that the blind is a permanent or long term isolation device.

Weight limitations and the associated difficulty of handling heavy pieces in the field are the primary considerations in specifying a spectacle blind over separate components.

Normally, a spectacle blind is mounted in the open position so that flow through the pipe is possible. Maintenance in a pipesystem can be a reason to rotate the spectacle blind in the close position so that the pipe is blanked off and no flow is possible. This run will take place through the hole drilled in the connection piece. By loosening all the bolts and removing part of them, the spectacle blind can be rotated in the chosen position. After placing new gaskets, the bolts can be re-assembled and tightened.

Technical specifications

Applications – standards

Standards	ASME B16.48 Flanges : ASME B16.5
Fluid temperature	According specifications
Type of fluid	Gas, steam, liquid
Nominal diameters	Adjusted to the flange size
Maximum operating pressure	Limited by flange rating - from 150# to 2500#

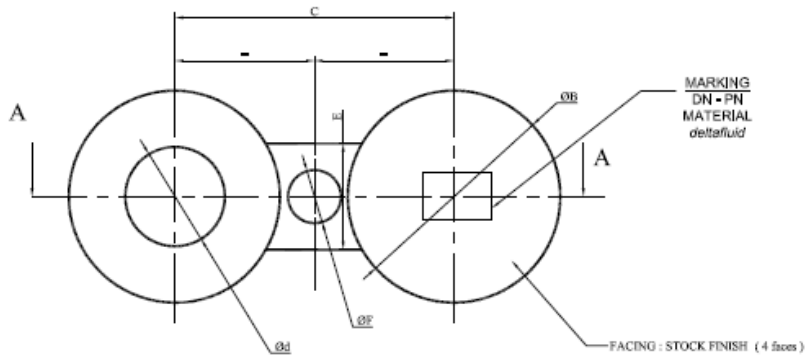
The restriction orifice is dimensionally checked in compliance with the manufacturing quality controls.

Manufacturing is possible according the european directive PED 97/23 CE requirements.

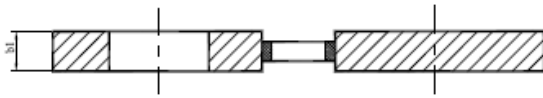
Features

Material	Carbon steel, stainless steel, etc
Type	RF/FF design to be inserted between flanges with flat seals or spiral wound gaskets Or RTJ design male or female versions to be inserted between corresponding flanges
Thickness	Calculated taking into account the flange rating
Data plate	Diameter and pressure rating mentioned on the spade or on the paddle when spade and spacer are separated

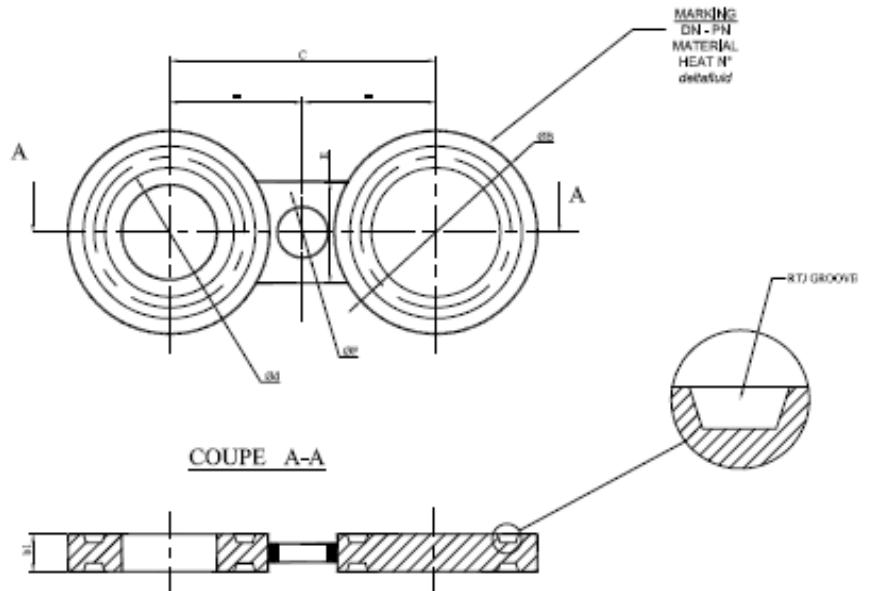
Spectacle blind RF



COUPE A-A



Spectacle blind RTJ female



Spectacle blind RTJ male

