

KEY DATA

- Simple sight flow indicator, with rotating paddle wheel or with moving flapper (transparent fluids visible thanks to the rotation of the wheel or the tilting of the flapper)
- Version with flanged window, with paddle wheel and flanged or welded connections to the pipe
- Machined version (monobloc) for demanding applications (nuclear for example) with or without moving flapper, welded or screwed connections to the pipe
- Version with transparent tube, flanged connections to the pipe
- Custom-built product according to the characteristics of pressure, temperature, type of fluid, etc.
- Direct or 90° passage
- Factory glass assembly with leak test

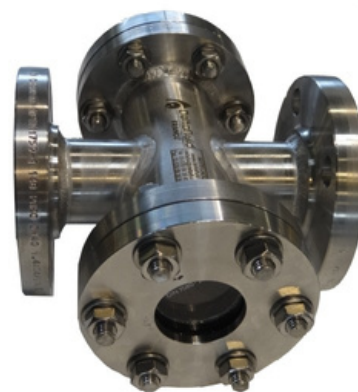


fig 1 : sight flow indicator, with flanged window, flanged connection to the pipe

BENEFITS

- Simple and reliable system: visual verification of fluid flow
 - Usable for all types of fluids
 - Very long life-time of the product
 - Resistant mounting (glass)
- Simple assembly & disassembly without dismantling the window: no risk of glass breakage



The flow indicator is an accessory placed on a pipe to visualize a circulating fluid. It is sized according to the pressure and temperature conditions of the fluid.

TECHNICAL CHARACTERISTICS

- Flow visualization of all types of fluids: transparent or opaque, liquid or gaseous
- Horizontal or vertical position, up or down flow
- Welding, flanged or screwed connection
- Body material: carbon steel, stainless steel
- Glass material: borosilicate DIN 7080
- Nominal diameter: ND15 to ND400 (1/2" to 16") - beyond, on request
- Working pressure⁽¹⁾ : NP20 or NP50 (150# or 300#)
- Glass thickness and diameter according to ND and NP
- Maximum working temperature⁽¹⁾ : 260°C
- Type of seals: flat seal (spiral seal, graphite, PTFE)

PLANS

- Sight flow glass, flanged window version with flanged connection



This version exists :

- with or without moving wheel
- in direct or 90° passage
- flanged or welded connections

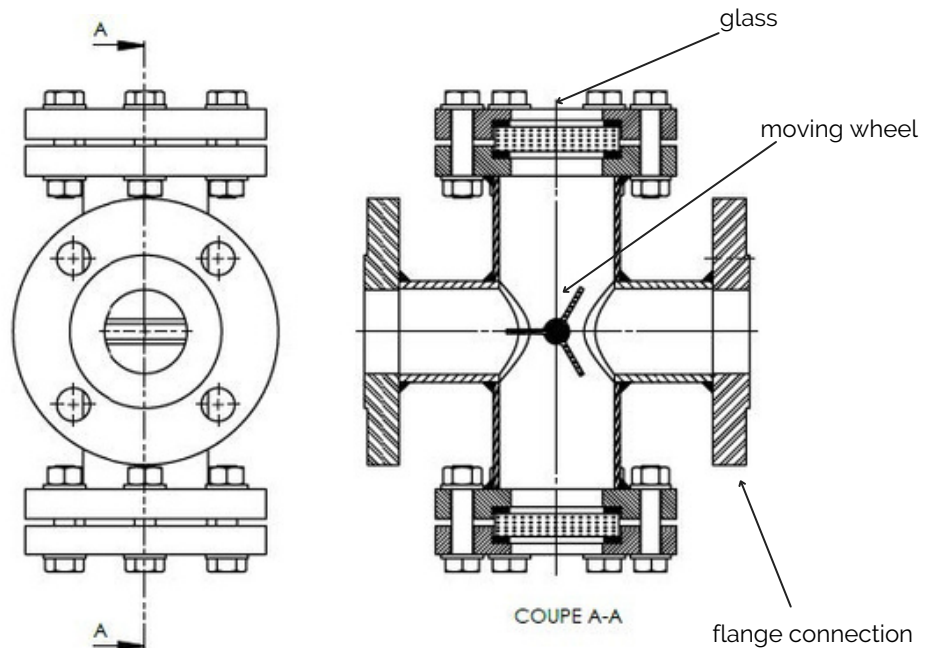


fig 2 : sight flow glass, flanged window version with flanged connection to the pipe

(1) special constructions for higher temperatures and/or pressures available on request

■ Machined sight flow glass

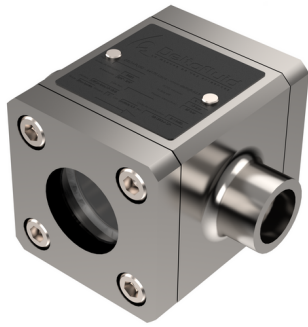


fig 3 : sight flow indicator, machined version with welded (SW) connection to the pipe

This version exists :

- screwed or welded (SW or BW) connections to the pipe
- with moving flapper (horizontal mounting) or without moving flapper (vertical mounting)

Benefits :

- machined from a square bar,
- no welding, no need for NDT testing on welds,
- very resistant

■ Sight flow glass with transparent tube with flanged connection

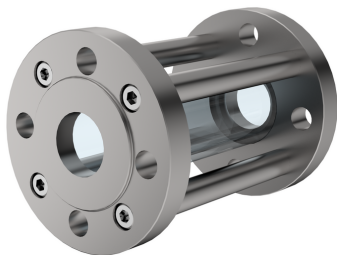


fig 4 : sight flow glass, transparent tube version with flanged connection to the pipe

Benefits :

- better visualization of fluid flow,
- clearer demonstration of a flow potentially loaded with particles

The dimensions of all sight flow indicators are adapted to your installation.
The dimensions (width and length) vary according to the ND and NP; contact us to check this information.
A precise plan with dimensions will be communicated to you upon your order.

ITEM CODES

- Sight flow indicator : AID-ND-NP-Material-Version

AID	ND	NP ⁽²⁾	Material	Version
Nominal diameter - ASME	1/2" to 16"	150# to 300#	A105 A350LF2 304L 316L Others	HB, window with flanges MN, machined TT, transparent tube
OR				
Nominal diameter - ISO	DN15 to 600	PN20 to 50		

- Examples sight flow indicators codes:

- AID-2-150-316-HB
- AID-DN100-PN50-304-MN

(2) special constructions for higher pressures available on request



Chemin Les Augas – RD817
64170 LACQ
FRANCE



delta64@deltafluid.fr



+33 (0)5 59 30 85 20



www.deltafluid.fr



DELTAFLUID